



### Inventory Management

For organisations with On-Site Clinics, the use of our Inventory Management application allows easy management of all dispensing of pharmaceuticals, disposables and complimentary medicines.

Coupled with health management programs and diagnosis, inventory management allows organisations to track individual risks and effect change to maximise health outcomes.

The 2CRisk system has been designed to incorporate any pharmaceutical products, which can be added at an Administration level as needed and modified over time.

*"The ability to maintain and manage all aspects of inventory related activities associated with the effective operation of an onsite clinic, which includes medicines dispensary, consumables and other proactive health supplements and products aimed at assisting individuals in maintaining optimal health."*

### Organisational Benefits

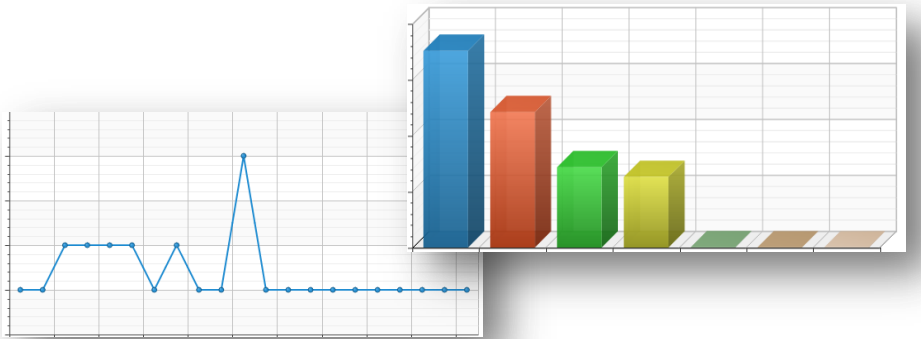
- Weekly, monthly, quarterly and annual aggregated reporting across all sites, or individual sites.
- Identify dispensing trending against health programs, such as chronic disease management.
- Case Manage to assure effective support
- Standardised reporting tools for stock on hand, stocktakes and reorder points.
- Aggregate data to identify health risks and design proactive support programs around dispensing of products.
- Confidence that data is encrypted and access controlled to protect Privacy and Confidentiality



- ✓ All Pharmaceuticals, Disposables and Supplements managed in one system and allocated per site for Clinic Management
- ✓ Automatically reduces stock on hand when issued to individuals.
- ✓ Allows for easy stocktake control across the entire organisation.
- ✓ Open, Receive, Transfer and dispose of stock at hand.
- ✓ Track and manage inventory against health programs and individual diagnosis to identify trends.
- ✓ Used in conjunction with our Health Management app for Clinics to manage the early onset of diseases, conditions and over period of time chronic disease management.
- ✓ Promotes the early detection of health risks that can negatively impact on the overall health of individuals.

Product	Category	Minimum Stock	Reorder Point	Product Stocktake Date	Opening SOH	Avn Mthr Usage	Current SOH	Product Issued	Product Disposals	Trans From	Trans To	Received	Receive Transfer	On Order	On Request	Expiry Date
Cocis 500mg	Pharmaceuticals	100	20	08.11.2016	30	20	3	20	7	+	0	0	+	0	0	0
Glucosamine 1000 mg	Supplements	200	100	08.11.2016	30	0	0	0	0	+	30	0	+	0	0	0
Iron Tablets 20mg	Supplements	200	100	08.11.2016	20	0	20	0	0	+	0	0	+	0	0	0
Multi Vitamin 500mg	Supplements	500	200	08.11.2016	20	0	20	0	0	+	0	0	+	0	30	0
Paracetamol 10mg	Pharmaceuticals	200	100	08.11.2016	30	28	30	0	0	+	0	0	+	0	0	0
Vitamin C 500mg	Supplements	300	150	08.11.2016	20	0	20	0	0	+	0	0	+	0	0	0
Zinc 25mg	Pharmaceuticals	200	150	08.11.2016	210	35	140	70	0	+	0	0	+	0	0	0

**Manage Workforce Health by Exception.** On the Case Managers' Dashboard, actions are flagged by due date and status. Easy to identify what individuals or parts of the workforce need following-up. Book appointments, complete actions & contact individuals. Focus on the actions that will improve wellbeing.



**Track pharmaceutical trends** to assist in individual and cohort management as well as identifying risks and disease management trends.

**Aggregate Data to Target Health Risks** Data can be aggregated to identify trends. Drill down by region, division, occupation, location, resource and demographic to target risks & implement the right intervention programs to affect positive outcomes.